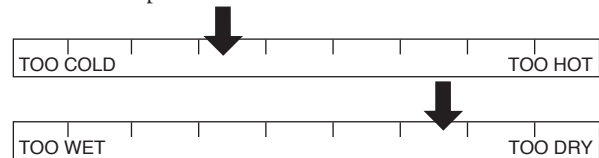




Farm Report 5/27/09

Rainfall0.8"
High Temperature 89°
Low Temperature 32°
Farmer Complaint Indicators™:



Welcome

Hello everyone and welcome to the 2009 season at Hog's Back Farm. It's been a long cool May but I think we're finally turning the corner towards more summer-like weather and can safely say that the first shares will be ready in two weeks. That will make the first share pickup day on Thursday, June 11. Enclosed in this handbook are most things you need to know about picking up your share. Please read it and save it for future reference, it is also on our website year round. If you have questions after reading this please feel free to drop us an email.

Farm News

The farm is a busy place in May. It's really the worst time of year for us to respond to emails, so my apologies if you emailed us and never got a reply. Every chance we get we're transplanting, seeding, watering and weeding. On top of that we're doing projects to make the season go smoother or improve things around the farm. The biggest infrastructure project for 2009 has been one of destruction rather than construction, last week we had a couple of guys come out and topple our old silos. I've been wanting to get rid of them so I decided this would be the year. We've only just begun cleaning up the mess that a toppling 50-ton silo makes.

The other big curve ball last week was getting a flat tire on my big tractor on Friday last week. Trying to get that fixed

on the Friday before Memorial Day weekend was fruitless so we were stuck without it until late Tuesday afternoon, just in time for a nice long rain. That has put us a little behind schedule but we'll catch up when it dries out.

The weather has been cool and dry. The rain we've gotten in the last 24 hours is the most we've had this month. Temperatures have averaged below normal, with a surprising 32.3° on the morning of Sunday, May 17. This was followed three days later by 89° and a 40 mph wind.

What's new for 2009

We have two new pickup sites for 2009 and we've dropped the pickup site in Hudson, WI. The new sites are both in St. Louis Park at 4740 W 27th St and 3916 Colorado Ave. Pickup site details follow and a map showing all of our pickup site locations is available on the website.

Also new for 2009 is the elimination of the printed newsletter. We'll be emailing it in pdf form to everyone on the morning of the share deliveries this year. If you aren't sure whether or not we have your email just re-sign up for it on the website.

What are my responsibilities as a member of Hog's Back Farm?

The single most important thing (besides enjoying their veggies) members can do during the season is to read the



newsletter. It contains important info about what's in the box, news, things you need to know and recipes. They are also always available on the website. The other general responsibilities are:

- 1) You agree to make a financial contribution to the farm in the spring for that season's share of vegetables.
- 2) You agree to pick up your share each week at the location and times specified, unless prior arrangements have been made.
- 3) You agree to transfer your veggies to bags at the pickup site and leave the box behind.

What do I do when I pick up my share?

When you pick up your share you will take one new box from the stack at the pickup site, open it up and transfer the produce to available grocery bags or if you have some cloth bags or your own box that works well too. There will be a clipboard with a list of members at the site. It is very important that you check your name off of the list so that we know you picked up your share. Please be careful checking off your name so that you check the right box, and please don't let children check off your name which can lead to confusion. Also there may be extra items from the farm that didn't make it into the box and these will be identified accordingly.

If I'm splitting a share can I just go to the pickup site and take my part out of our box?

No. To avoid confusion at the pickup sites it is important that people who are splitting shares take the entire share with them and agree to meet whomever they're splitting with to divide the share. There cannot be share boxes left at the pickup site with only a partial share left in them because they do get taken by mistake. It is o.k. to split the share into grocery bags and leave the split half clearly labeled for the folks you split with. We rely on you to communicate with the folks you split a share with to avoid confusion.

When do I pick up my share?

Share pickup times vary by pickup site. Shares are dropped off in a loop starting with South Minneapolis, St. Louis Park sites, Humboldt, and St. Paul. Here are approximate times when your shares should be ready for pickup:

- 4411 18th Ave, Minneapolis 1:30pm
- 5512 Columbus Ave, Minneapolis 2:00pm
- 3916 Colorado Ave, St. Louis Park 2:30pm

- 3936 Natchez, St. Louis Park 2:45pm
- 4740 W 27th St, St. Louis Park 3:00pm
- 4001 Highwood, St. Louis Park 3:15pm
- 2445 Humboldt, Minneapolis 3:30pm
- 1686 St. Clair, Saint Paul 4:00pm
- 1184 Hague, Saint Paul 4:15pm

Please be patient if we are not there right on time. Rarely are we more than ten minutes late, things do go wrong some mornings, like the time last year that they stopped the truck at the MN/WI border weigh station for over an hour. The shares are available for pickup at all sites until 7pm.

What do I do if I'm going to be late?

If you are going to be unable to make it by 7pm you must make prior arrangements. Shares that are left past 7pm will be taken somewhere where the food will get used. The best solution is to have someone pick up the share for you if you are unable to pick it up yourself. **IF YOU CANNOT MAKE IT ON TIME AND WILL BE LATE TO PICK UP YOUR SHARE YOU MUST LET THE PICKUP SITE HOST KNOW SO THAT THEY DO NOT GIVE AWAY YOUR SHARE.** If they do not hear from you they are authorized to give away your share after 7pm. You do not need to contact us if someone else is picking up your share for you, unless they will be picking it up late. Please explain the procedure for picking up your share to whoever picks it up for you, there is not always someone available at the pickup site to answer questions. Please be respectful and courteous by picking up your share on time. We rely on the goodwill of the people who host the pickup sites and need your cooperation.

What do I do if I'm going on vacation?

Again the easiest solution is to have a neighbor or friend pick up your share, or it makes a nice reward for the house-sitter or mail-collector. You do not need to contact us if someone else is picking up your share, just let them know how to do it. Alternately you may opt for us not to pack your box during that time, or to donate your share to a nearby food shelf. If you would like to pursue either of these options please let us know by email at least a week in advance.

What else will be available for purchase at the share pickup?

We will again be offering local maple syrup and honey for

purchase at the pickup sites. Exact change or checks are helpful. If you have specific requests (larger sizes of syrup and honey) please let us know by email. We also will have copies of *Asparagus to Zucchini*, a handy cookbook published by CSA growers in Madison, and our own organic tote bags. And we may have a few of our own eggs.

If you're interested in other organically raised meats you can contact Randy and Lynn Anderson who have some pork and beef available to order. Their phone number is 715-285-5226. They also have some small packages of their products available from time to time, so if you are coming down to the farm for our field days you can give them a call and see what they have. If you have other suggestions or things you'd like to see drop us a line and we can probably point you in the right direction. Please watch the newsletter for more information on the syrup, honey and fruit ordering.

How do I contact Hog's Back Farm?

Our contact information is listed at the bottom of each of these pages. Far and away the best way to contact us is by email since we can respond to it when it's convenient. If you need to contact us immediately you can try the cell phone number listed below. But be aware that we are in a very rural area and the cell phone coverage can be weak, and that sometimes tired farmers forget to charge their phone or can't hear it ring over the din of the tractor. Leave a message there and we will get it. And again if you need to pick up your share late or make other arrangements regarding share pickup you should contact your pickup site host. This pickup site host phone numbers are listed below.

Can I come to the farm and weed carrots?

Of course! We have two field days at the farm this season. They are listed below. You also can make arrangements to come out at other times, just contact us in advance. We always need help on the share harvest days (Wednesdays and Thursdays) so if you need a day out in the sunshine let us know. We appreciate it when you let us know you are coming, non-member friends and family are always welcome at field days.

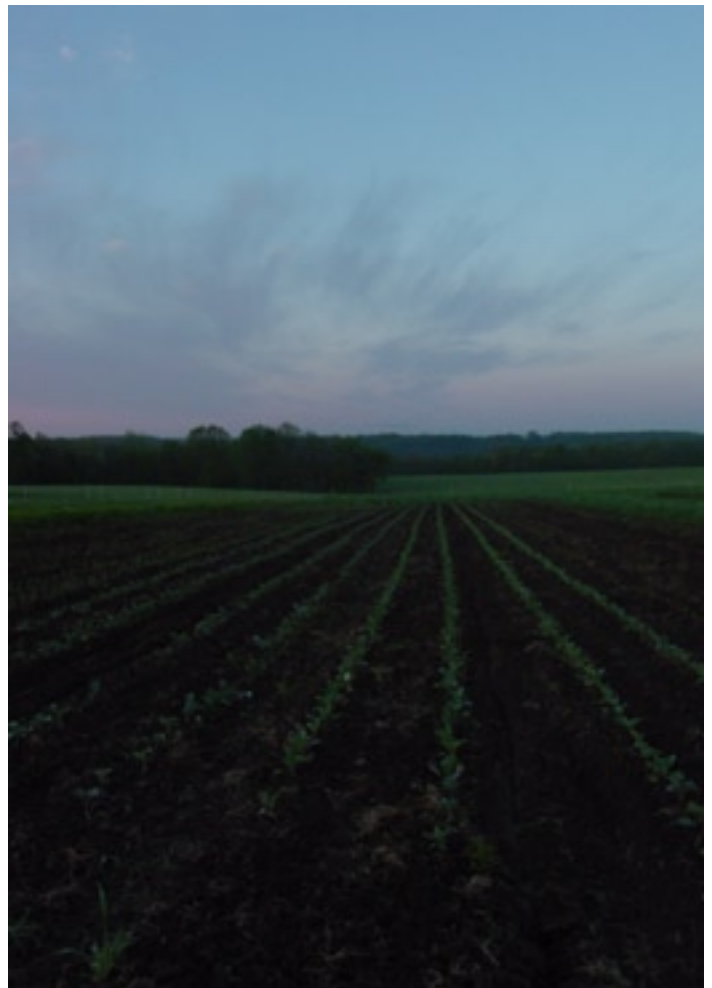
Field days are a chance to get out into the country and see your food growing. Lend a hand and get dirty, or go for a walk through the fields and woods. They've also become known for their world-class pot-luck lunches. Field days will be canceled in the event of rain, watch the newsletter for field day details

Saturday July 11

If you argued that we really don't have a summer in the upper Midwest, that there's just spring and fall than this would be the end of spring and the beginning of fall. Come out to help transplant the fall veggies and pick the last of the spring peas. For the lucky few who venture into the woods at the edge of the field this is also peak time for the wild blackcap raspberries.

Saturday, September 26

Come out to the farm and pick out pumpkins for yourself or the kids. Fall is a beautiful time to come out to the farm and savor the change in the seasons. We'll even have a wagon ride if the wagon isn't piled high with squash. The big pumpkins don't show up in the share boxes, so this is your only chance to get them. Please RSVP for this field day so we make sure that we have enough pumpkins for everyone. In 2008 we had a record 80 people at the farm and had the first annual impromptu hay pile as the kids tore apart hay bales and spent hours jumping off the hay wagon into the pile.



Share pickup sites

Below are addresses and details of the share pick up sites, a map of them all can be found on our website by clicking on the Signup tab. These are member's homes who have graciously allowed us to use them to distribute our shares, please respect their privacy. Please check the listing above for when the shares are available at each site. All share deliveries are on Thursdays each week.

4411 18th Ave S, Minneapolis

The South Minneapolis site is the home of Andy and Jen Boss. The pickup will take place in front of their home to the side of the front door. It's easiest to park on 44th and walk down the alley. Their telephone number is (612)-825-0723

5512 Columbus Ave S, Minneapolis

Sheila and Drake Jacobson host this site. Pickup takes place in front of their garage on the alley. It's o.k. to drive down the alley but please respect the neighbors. Their telephone number is (612) 821-0755.

3916 Colorado Ave, St. Louis Park

Chris and Cathryn Kasic are the hosts of this new pickup site. The pickup will take place in front or to the side of their garage. Their telephone number is 952-925-7839.

3936 Natchez, St. Louis Park

Kelly Bunte hosts this Saint Louis Park site. The pickup will take place in their driveway in front of the garage. Their telephone number is (952)-926-2498.

4740 W 27th St, St. Louis Park

Liba and Jeffrey Herman host the other new Saint Louis Park pickup site. Pickup will be alongside the second garage, it's o.k. to drive up their driveway. Their phone number is (612)-791-5550.

4001 Highwood, St. Louis Park

Lisa Genis and Steve Pratt host this Saint Louis Park pickup site. The pick-up takes place on the driveway, or in the garage. Please park on the street and walk up the driveway. Their telephone number is (952)-922-8747.

2445 Humboldt, Minneapolis

The Kenwood/Uptown site is the home of Alex Rothman and Nina Sayer. Their address is 2445 Humboldt Ave S. They are 3 blocks east of Lake of the Isles and 2 blocks west of Hennepin. The pickup is at their garage off of the alley. The easiest thing to do is park on W 25th St and walk up the alley. Their telephone number is (612) 381-9737.

1686 St. Clair, St. Paul

The Mac/Groveland St. Paul site is the home of Sharon Jansa and Keith Barker. Park on the street and the pickup is on the front porch. Their telephone number is (651) 489-3362.

1184 Hague, St. Paul

The Hague Ave St. Paul site is the home of Julie and Leben McCormick. Park on the street and the pickup is on the front porch. Their telephone number is (651) 917-2747.

We are located 65 miles southeast of Saint Paul in Pepin County, Wisconsin. If you've been to the farm before forget the old directions because we've moved. Nowadays with google and mapquest you can get pretty good directions by using either but sometimes they choke on our address, which is W8937 Moritz Lane, Arkansaw, WI 54721. The quickest way is not the shortest, but because of the freeway it is quicker. If you're going to try a different route you should probably drop me an email first so I can make sure you get here.

From the twin cities:



- Go East on 94 into Wisconsin
- Continue to Exit 28 (WI-128)
- Take a right on 128, and continue on it for 11.5 miles to WI-72
- Take a right on 72, continue following 72 for 3 miles to County S
- Take a left on S and continue on it for 4 miles to County X (and the very very small town of Exile)
- Take a left on X, in 1.5 miles X becomes XX, just keep going another half mile keeping an eye out for a gravel road to the right named 70th St. It's immediately after a dairy farm on the right and it's easy to blow by it. Incidentally the dairy farm right before it is where the maple syrup is cooked down.

it turns back into pavement and around several corners until you come to a stop sign. The road you are on has magically become Weber Road at this point. Take a right onto Hartung Road.

- Go one-half mile on Hartung to the first left, Moritz Lane.
- Turn on Moritz and go a half mile to our farm on the right, white house, red barn, etc. We're the first and only farm on the right. Don't enter into the driveway by the mailbox, continue on Moritz to the second driveway.